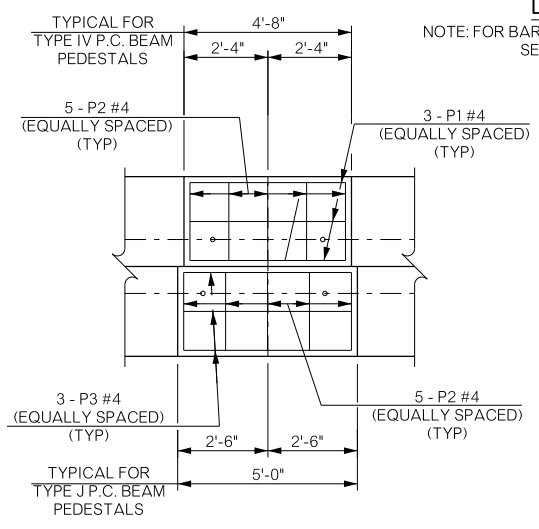
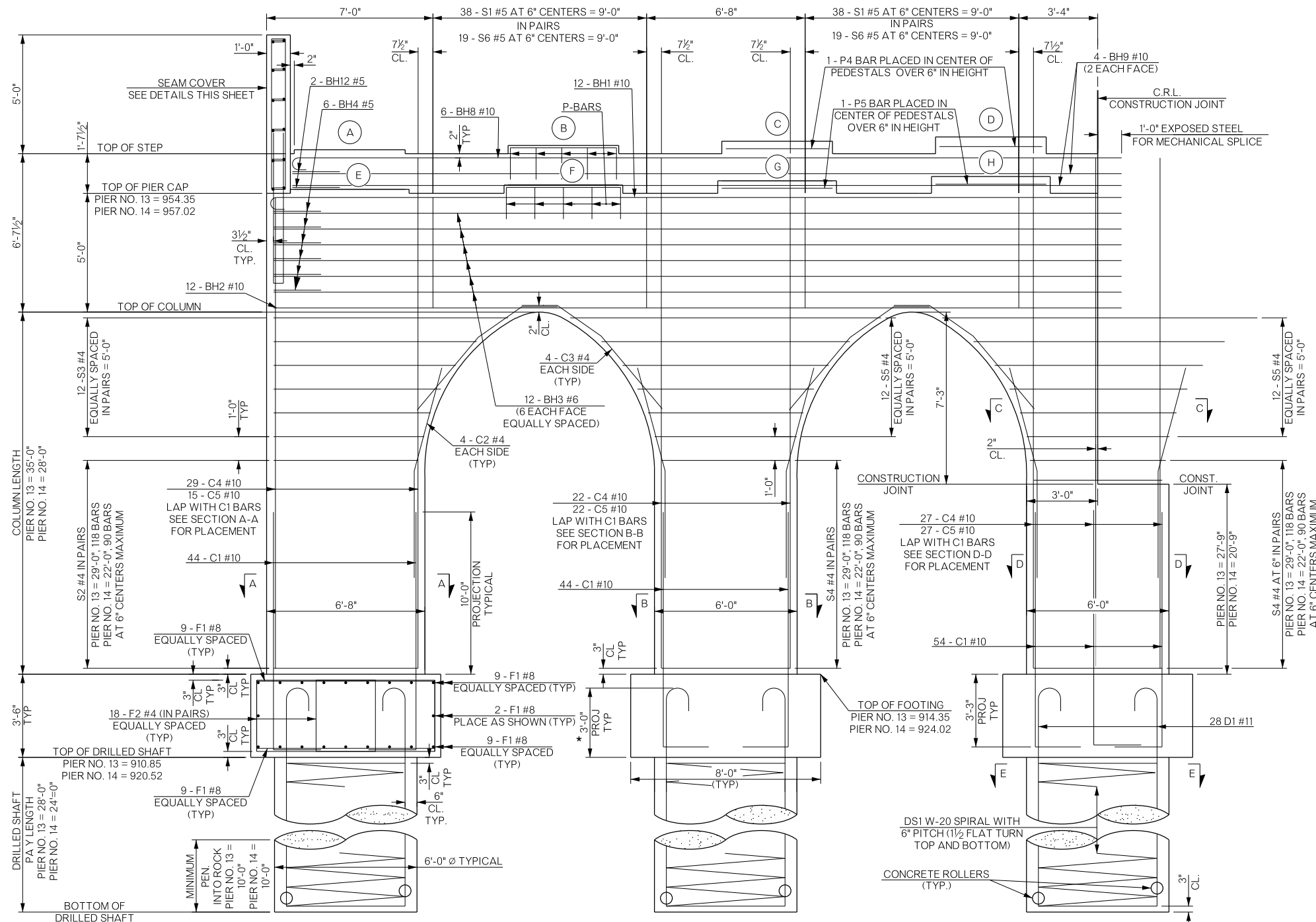
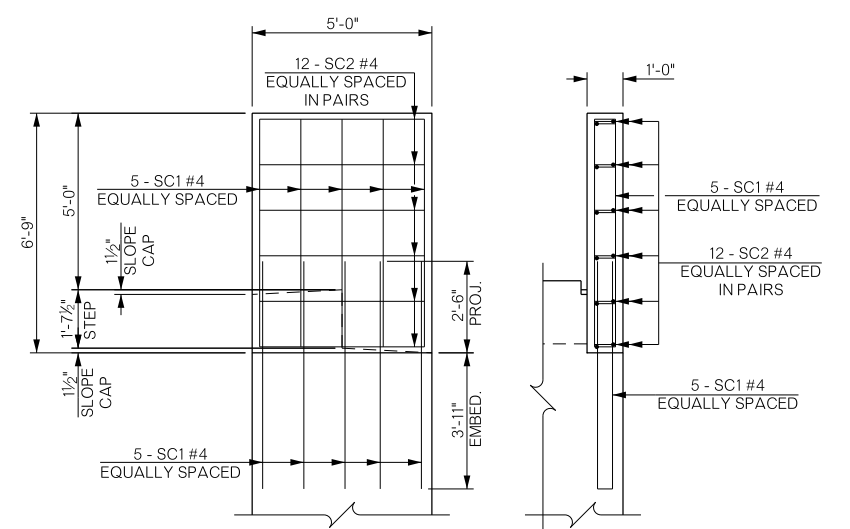
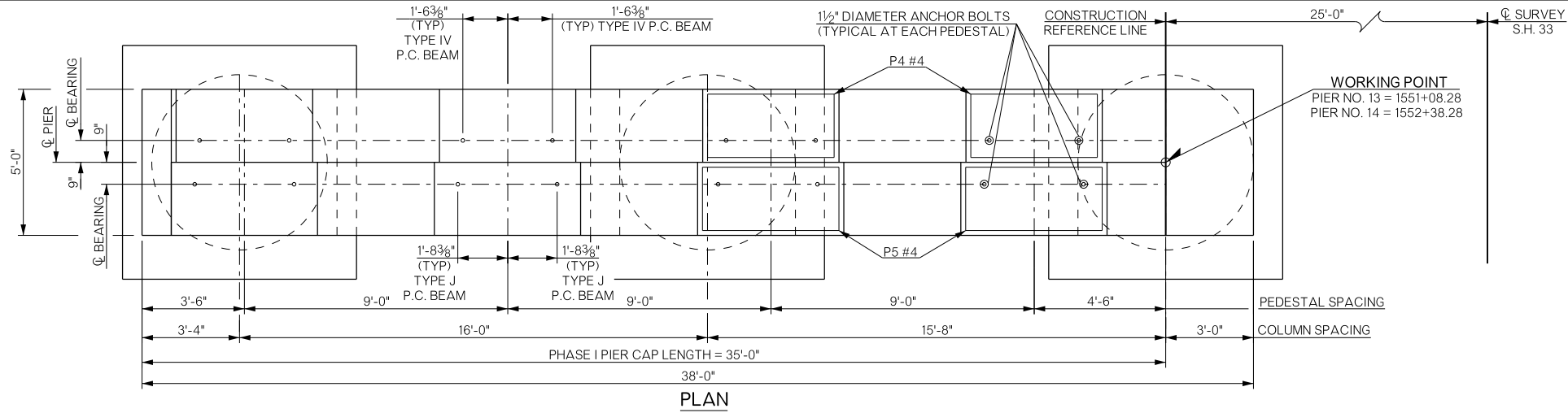


REVISIONS		
REV. NO.	DESCRIPTION	DATE



NOTES:

- * ANY PROJECTED LENGTH PAST TOP OF DRILLED SHAFT SHALL NOT BE CONSIDERED ADDITIONAL PAY LENGTH FOR DRILLED SHAFT
- PENETRATING WATER REPELLENT TREATMENT SHALL BE APPLIED TO THE TOP OF THE PIER CAP, TOP OF SEAM COVER, INCLUDING ALL SURFACES OF THE PEDESTALS, ALL VERTICAL FACES OF THE PIER CAP AND SEAM COVER.
- ALL EDGES OF PIER CAP SHALL HAVE A 1 1/2" CHAMFER EXCEPT FOR PEDESTAL EDGES WHICH SHALL HAVE A 3/4" CHAMFER.
- FOR ARCH FORMING DATA, SEE SHEET B035.
- FOR DETAILS OF ROLLER INSTALLATION AND ROLLER PLACEMENT, SEE SHEET B044.
- FOR DETAILS OF SPIRAL REINFORCING SPLICE, SEE SHEET B044.
- FOR DETAILS OF PIER AESTHETIC TREATMENTS, SEE SHEET B045.
- FOR DETAILS NOT SHOWN ON THIS SHEET, SEE SHEETS B042 - B044.

BRIDGE "A" SH-33 OVER COTTONWOOD CREEK		LOGAN COUNTY	
DETAILS OF PIERS NO. 13 & 14 (SHEET 1 OF 4)		Design	GT 11/15
		Detail	TIS 2/16
		Check	TT 7/16
		Squad	PEARSON
		Engr.	HERNANDEZ
STATE OF OKLAHOMA		DEPARTMENT OF TRANSPORTATION	
JOB/PIECE NO. 21860(04)		SHEET NO. B041	